



# Ancillary Range

## Introducing the “New Era” of grinders!

A uniform and correct treatment of solids is necessary in wastewater and sludge handling systems. However, it is often difficult to choose the right solution at the right cost. Our TG series for solids' size reduction is one of the most innovative, cost-effective solutions on the market. We are proud of the extremely tough design, combined with a flexible internal component configuration. Furthermore, the accessories and myriad design options mean you can create YOUR shredder without breaking the bank.

## Features & Benefits

### Equipment protection

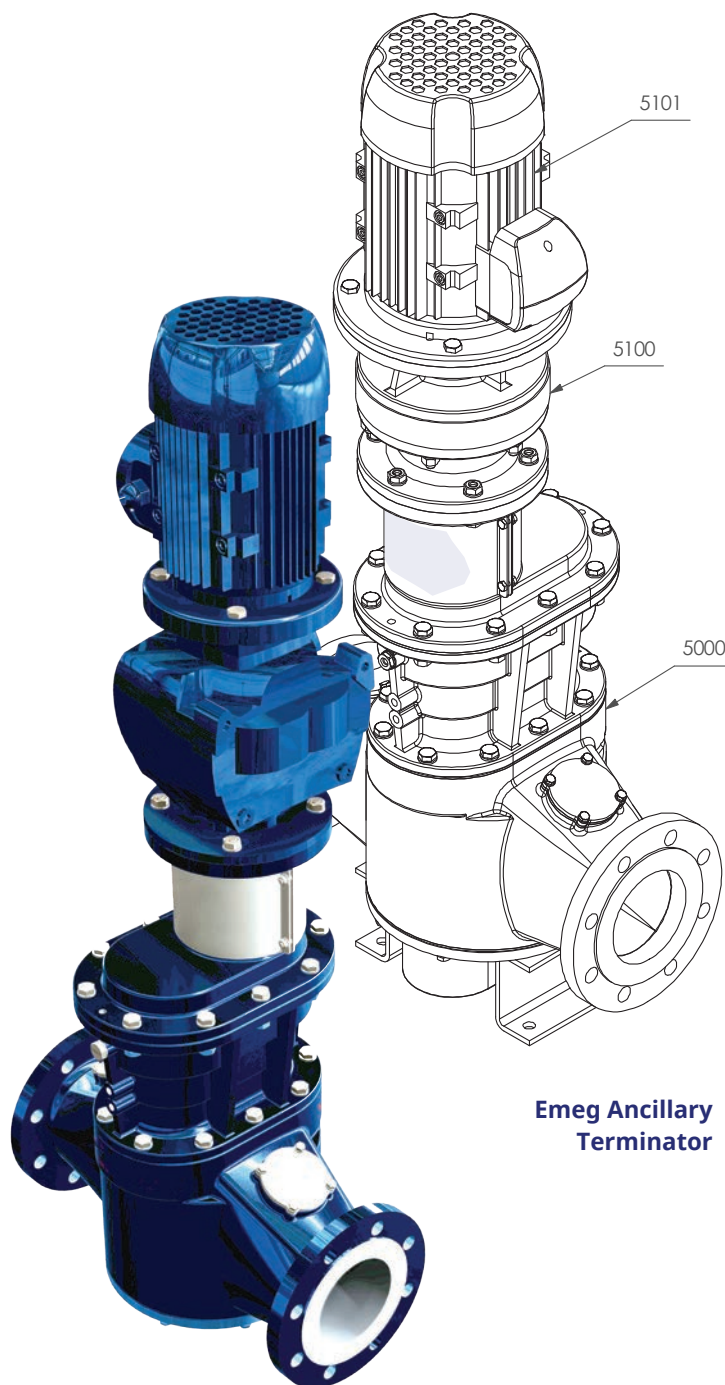
- ◆ Protect your pumps from solids
- ◆ Increases the lifetime of components subject to wear
- ◆ Protect your critical equipment from damages due to tough solids
- ◆ Reduce unforeseen shutdown

### Proper treatment operations

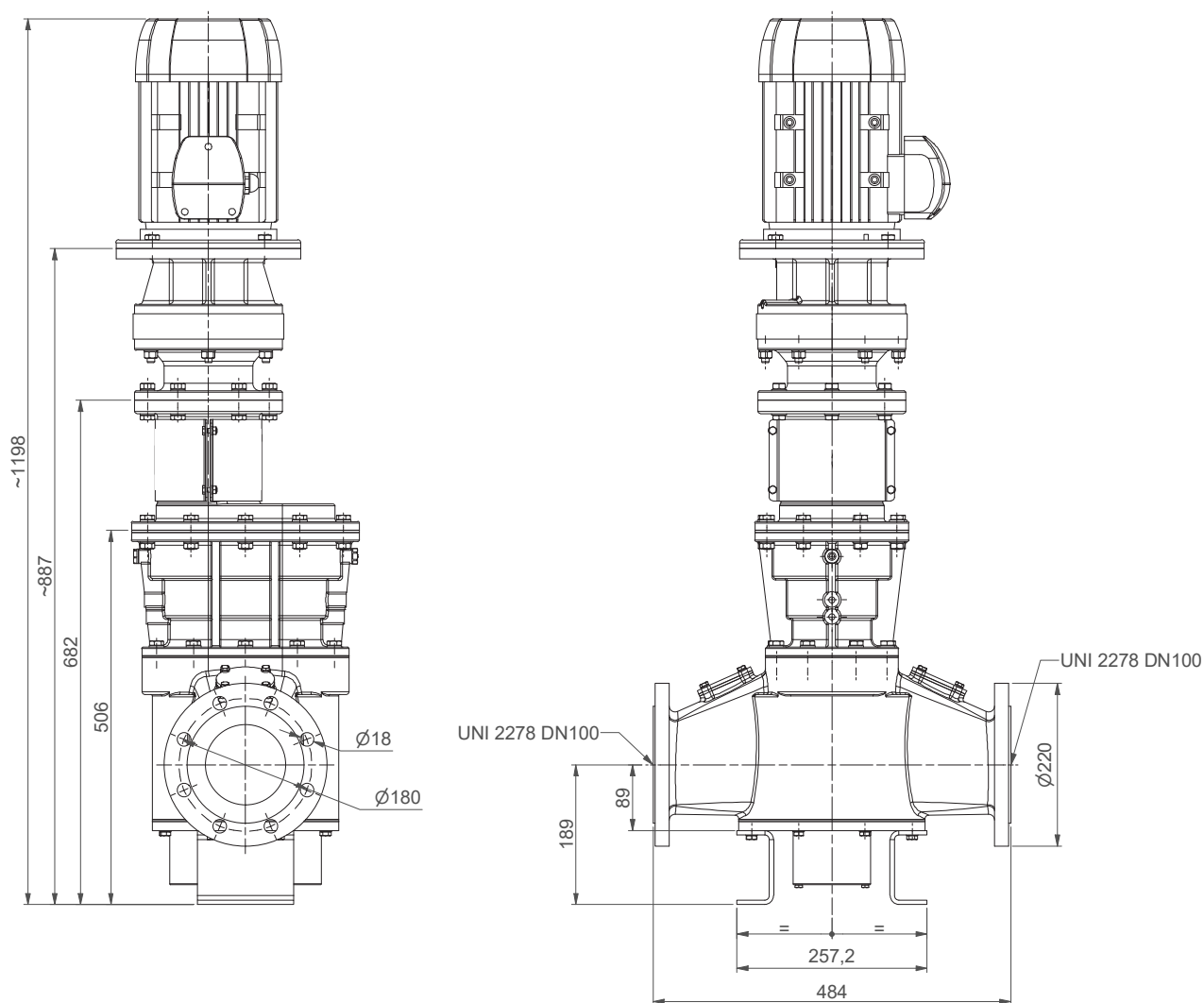
- ◆ Block inorganic materials (organic stays in the process)
- ◆ Less waste compared to screening
- ◆ Improve processing quality

### Reduce operating costs

- ◆ Smaller piping and pumps required
- ◆ Shorter pump run cycles and lower electrical consumption
- ◆ A cleaner plant us a more efficient plant



**Emeg Ancillary Terminator**



Model	Power (kW)	Flow Rate (m³/h)	Pipeline Size (mm)	Pressure Drop	Standard Dimensions			Approximate Net Weight (kg)
					A	B	C	
TGR 5	1,1 – 1,5	100	100	0,05	1180	629	140	220
TGS 5	1,5 – 2,2				1216	700	212	250
TGC 5	1,1 – 1,5				1263	783	294	230

**TGR = Standard version, cantilever design.**

**TGS = Strong version with second bearing housing for heavy-duty application.**

**TGC = Standard version with stone catcher.**

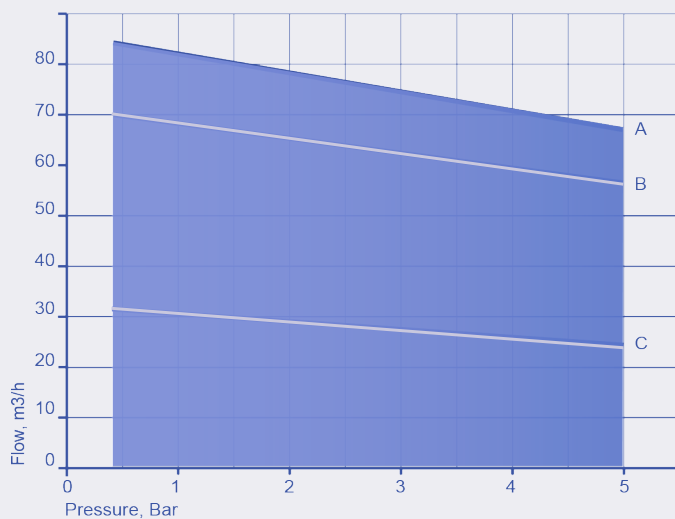
## Technical data

Model	Flow l/100 rev.	Max differential pressure bar	Min speed R.p.m	Max speed R.p.m	Max. flow l/min.	Max power req. kW	Weight kg
MG14	259	5	180	540	1400	18	50

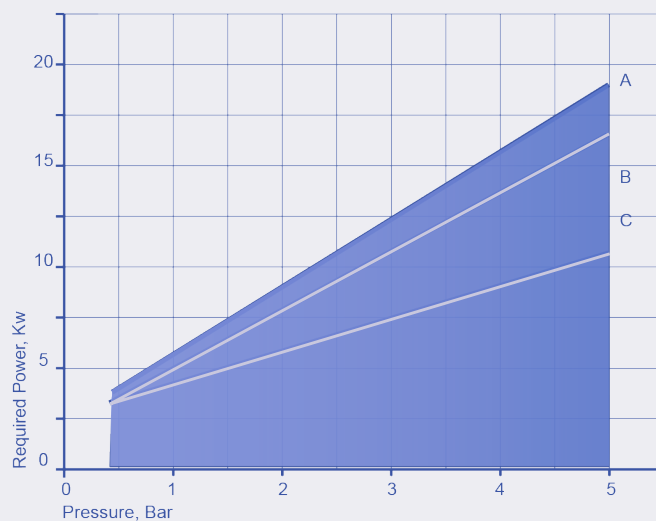
## Performance curves

Flow/Pressure curve

A= 540 R.p.m; B=450 R.p.m; C=225 R.p.m;



Power/pressure curves

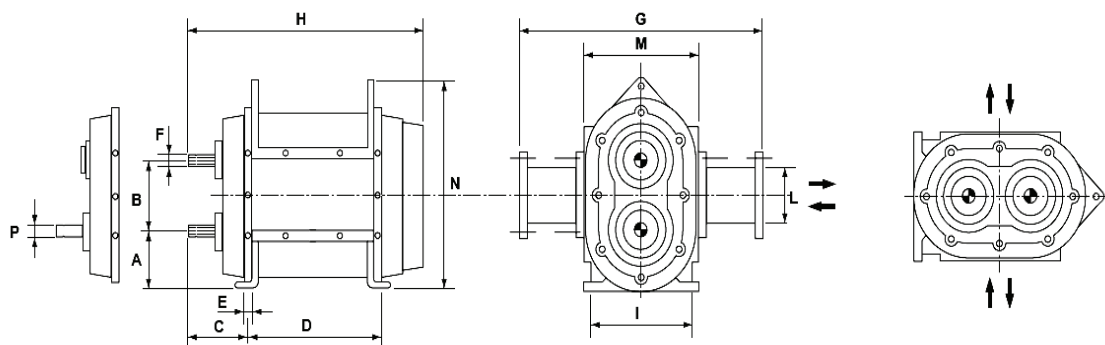


Continuous use   Intermittent use   Occasional use

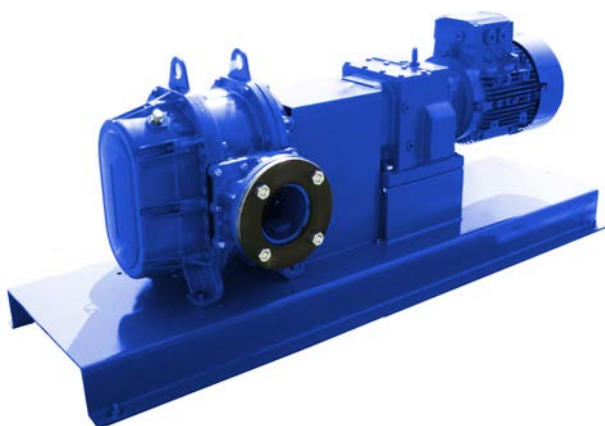


## Dimensions

Fig 1



Mod	A	B	C	D	E	F	G	H	I	L	M	N	P	Starting Torque	Max. pressure	Max. Power	Mini Speed	Max. Speed	Total weight
	mm						mm				mm			Nm	Bar	Bar	R.p.m	R.p.m	KG
MG14	135	140	135	223	14	ASA E 1 "1/2 DIN 9611A	510	470	230	DN100	274	463	35g6	120-140	5	20	180	540	105



An overview of Emeg's ever-growing inventory of valves, strainers, solenoids, actuators and gauges.



#### EMV 54 PN32 Brass Ball Valve

Features:

- ✦ Screwed BSP parallel (ISO 228/1)
- ✦ Anti-blow-out stem
- ✦ PTFE seat
- ✦ Full bore
- ✦ WRAS approved



#### EMV 89 PN25 Brass Ball Valve

Features:

- ✦ Compression ends
- ✦ Anti-blow-out stem
- ✦ PTFE seats & seals
- ✦ Full bore
- ✦ WRAS & EN331 approved
- ✦ Locking lever & tee handle options available



#### EMV 40P PN40 Brass Ball Valve

Features:

- ✦ Screwed BSP parallel (ISO 228/1)
- ✦ Anti-blowout stem
- ✦ PTFE seats & seals
- ✦ Full bore
- ✦ WRAS & EN331 approved
- ✦ Locking lever (1/2" to 2" only) & tee
- ✦ Handle (1/4" to 1" only) options available

**UK Head Office:**

3 Dunston Place, Dunston Road,  
Whittington Moor, Chesterfield,  
S41 8NL  
T: +44 (0)1246 268678

**Design Office:**

5 Scholar Green Road,  
Stretford, Manchester,  
M32 0TR  
T: +44 (0)161 8656208

**Dubai Office:**

Office 1905, Tameem House,  
Barsha Heights, Al Thanyah First,  
Dubai, UAE  
T: +971 04 568 6798



[www.emeg.co.uk](http://www.emeg.co.uk)



#### ART 40T PN40 DZR Brass Ball Valve

##### Features:

- ✦ Screwed BSP taper ends (ISO 7/1) or NPT (ANSI B1.20.1)
- ✦ Anti-blow-out stem
- ✦ PTFE seats & seals
- ✦ Full bore
- ✦ WRAS approved



#### EMV 59 PN25 DZR Brass Ball Valve

##### Features:

- ✦ Compression ends (BS EN 1254-2 (1998))
- ✦ Anti-blow-out stem
- ✦ PTFE seats & seals
- ✦ Full bore
- ✦ WRAS approved



#### EMV 279 Ductile Iron Ball Valve Flanged Ends

##### Features:

- ✦ Flange mounting PN16 only
- ✦ ISO 5211 direct mount
- ✦ Inside and outside epoxy coating
- ✦ Optional lockable Lever
- ✦ Blow out proof stem
- ✦ Chrome plated brass ball



#### EMV 902T PN82 Stainless Steel 2 Piece Ball Valve

##### Features:

- ✦ BSP taper (ISO 7/1)
- ✦ RPTFE (15%) seats
- ✦ PTFE seals
- ✦ Full bore
- ✦ PN82 rated
- ✦ Locking device
- ✦ Tee handles available for 1/4", 3/8" and 1/2"





#### EMV 135 PN16

### Ductile Iron Butterfly Valve Lugged & Tapped Type

#### Features:

- ✦ Flange mounting PN16 only
- ✦ BS5155 (BS EN 593)
- ✦ ISO 5211 direct mount
- ✦ Lockable dandle
- ✦ Epoxy coat finish
- ✦ WRAS approved
- ✦ MSS-SP-67



#### EMV 135GB PN16

### PN16 Ductile Iron Butterfly Valve Lugged & Tapped Type

#### Features:

- ✦ Flange mounting PN16 only
- ✦ BS5155 (BS EN 593)
- ✦ ISO 5211 direct mount
- ✦ Epoxy coat finish
- ✦ WRAS approved
- ✦ MSS-SP-67



#### EMV 135GB PN16 DN350-600

### PN16 Ductile Iron Butterfly Valve Lugged & Tapped Type

#### Features:

- ✦ Flange mounting PN16 only
- ✦ BS5155 (BS EN 593)
- ✦ ISO 5211 direct mount
- ✦ Epoxy coat finish
- ✦ MSS-SP-67



#### EMV 145

### Ductile Iron Butterfly Valve Lugged & Tapped Type

#### Features:

- ✦ Flange mounting PN16 only
- ✦ BS5155 (BS EN 593)
- ✦ ISO 5211 direct mount
- ✦ Lockable handle
- ✦ Epoxy coat finish
- ✦ 8", 10" and 12" come with gearbox as standard

#### UK Head Office:

3 Dunston Place, Dunston Road,  
Whittington Moor, Chesterfield,  
S41 8NL  
T: +44 (0)1246 268678

#### Design Office:

5 Scholar Green Road,  
Stretford, Manchester,  
M32 0TR  
T: +44 (0)161 8656208

#### Dubai Office:

Office 1905, Tameem House,  
Barsha Heights, Al Thanyah First,  
Dubai, UAE  
T: +971 04 568 6798



[www.emeg.co.uk](http://www.emeg.co.uk)



### EMV 368 PN20 Bronze 'Y' Type Strainer

#### Features:

- Available in screwed BSP taper (ISO 7/1) or NPT (ANSI B1.20.1)
- Bronze body
- Screwed cap
- PN20 rated
- WRAS approved



### EMV 68 PN20 Brass 'Y' Strainer

#### Features:

- Screwed BSP parallel (ISO 228/1)
- Brass body
- Stainless steel mesh



### EMV 185 PN16 Cast Iron 'Y' Strainer

#### Features:

- Flange mounting PN16 only
- Flange conforms to BS EN1092 PN16
- BS EN 558-1 series 1
- DN50 & DN65 square drain port
- DN80 - DN600 circular drain port



### EMV 84M PN20 Brass Swing Check Valve

#### Features:

- Screwed BSP parallel (ISO 228/1)
- Brass body
- Metal seat





**EMV 170 PN16**  
**PN16 Cast Iron Swing Check Valve**

**Features:**

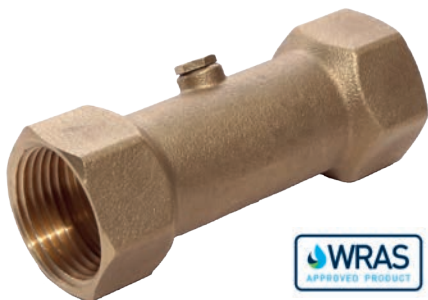
- Flange mounting PN16 only
- Flange conforms to BS EN1092 PN16
- BS5153 (BS EN 558-1 Series 10)



**EMV 172**  
**PN16 Ductile Iron Ball Check Valve**

**Features:**

- Flanged mounting PN16 only
- Valve design according to EN12334
- DIN3202 face-to-face
- Epoxy coat finish



**EMV 36**  
**DZR Brass Double Check Valve BSP Parallel F/F Ends**

**Features:**

- Screwed BSP parallel (ISO 228/1)
- WRAS approved
- Conforms with EN13959
- Prevention of back flow and back syphonage contamination



**EMV 37**  
**DZR Brass Double Check Valve Compression Ends**

**Features:**

- Compression ends
- WRAS approved
- Conforms with EN13959
- Prevention of back flow and back syphonage contamination



### EMV 310 Bronze Drain Cock

#### Features:

- Screwed male BSP taper (ISO 7/1)
- BS 2879/2 type A
- Hose connection outlet
- WRAS approved



### EMV 1300 Bronze Air Release Valve

#### Features:

- Screwed BSP parallel (ISO 228/1)
- Fitted with O-Ring seal



### EMV 642 Gunmetal Safety Valve

#### Features:

- Screwed BSP parallel (ISO 228)
- Body gunmetal
- Suitable for gases and liquids
- Fitted with diaphragm to protect spring housing
- Set range 0.5 to 16 bar
- WRAS approved
- ISO 4126-1, PED 2014/68/EU
- Marine approvals - GL, DNV
- ATEX approval available at extra cost
- 5 year warranty
- Test certificate to EN10204-3.1 available on request



### EMV 670 M Pressure Reducing Valve with gauge

#### Features:

- Controls static and dynamic pressure
- Conforms to BS EN 1567
- Easy to service high temperature cartridge
- AISI 304 stainless steel cartridge filter
- Supplied with a pressure gauge
- WRAS approved
- 1" to 2" BSP parallel male ends (ISO 228/1)



#### EMV 22

### DZR Fixed Orifice Double Regulating Valve (FODRV)

#### Features:

- BSP Parallel (ISO 228/1)
- Handwheel with shut off function and clear 360° reading
- Digital scale with lock function
- Fixed orifice with  $\pm 5\%$  flow measurement accuracy
- Conforms to BS 7350 / BS 5154
- WRAS approved



#### EMV 255

### Flanged Fixed Orifice Double Regulating Valve (FODRV)

#### Features:

- Flanged PN16
- Position indicator
- Fixed orifice with  $\pm 5\%$  flow measurement accuracy
- Supplied with 2 fitted test points
- Extensions are included but not fitted



#### EMV 33SV

### Thermostatic Mixing Valve (TMV)

#### Features:

- Cold water supply temperature: 5°C - 25°C
- Hot water supply temperature: 55°C - 65°C
- Temperature adjustment range: 30°C - 48°C
- Factory set thermostatic controller: 42°C  $\pm 2^\circ\text{C}$
- Accuracy of outlet temperature:  $\pm 2^\circ\text{C}$
- Min. temperature differential: 12°C (between hot supply and outlet temp)
- Supply pressure imbalance dynamic: 2:1
- Flow rate minimum: 5 Litres/min
- DZR brass body
- WRAS approved
- Certified to TMV2 and TMV3



#### HQ8 - HQ120

### HQ Electric Actuator for Emeg Ball & Butterfly Valves

#### Features:

- Wide range of output torques
- Alloy gearing
- Control options include 4-20ma positioner and failsafe
- Die cast aluminium housing
- Multi voltage options

#### UK Head Office:

3 Dunston Place, Dunston Road,  
Whittington Moor, Chesterfield,  
S41 8NL  
T: +44 (0)1246 268678

#### Design Office:

5 Scholar Green Road,  
Stretford, Manchester,  
M32 0TR  
T: +44 (0)161 8656208

#### Dubai Office:

Office 1905, Tameem House,  
Barsha Heights, Al Thanyah First,  
Dubai, UAE  
T: +971 04 568 6798



www.emeg.co.uk





## Namur Solenoid Universal Direct Mount Namur Solenoid

### Features:

- Life cycle 12,000,000 operations  
5/2 - 3/2 Interchangeable
- Available in 110VAC, 230VAC, 24VAC, 24VDC
- IP65
- Manual over-ride control



## EMV SB Switchbox

### Features:

- Powder coated aluminium switchbox to IP67
- Solid & compact design with high visibility beacon indicator
- Captive cover bolts are safely retained during installation and maintenance
- Easily adjustable with no tools required
- Dual cable entries are provided
- Mounted to the actuator using a NAMUR standard stainless steel mounting bracket
- Switchboxes available to suit hazardous areas



## HP Pneumatic Actuator HP Pneumatic Actuator for Emeg Ball & Butterfly Valves

### Features:

- Double acting & spring return models
- Hard anodised aluminium housing
- Wide range of torque & control options available



## SLP Series

- Available in 230VAC, 110VAC  
12VDC, 24VDC, 24VAC
- Thread standard: ISO 228/1
- Coil rating - IP 65
- Coil duty cycle - 100%

### UK Head Office:

3 Dunston Place, Dunston Road,  
Whittington Moor, Chesterfield,  
S41 8NL  
T: +44 (0)1246 268678

### Design Office:

5 Scholar Green Road,  
Stretford, Manchester,  
M32 0TR  
T: +44 (0)161 8656208

### Dubai Office:

Office 1905, Tameem House,  
Barsha Heights, Al Thanyah First,  
Dubai, UAE  
T: +971 04 568 6798



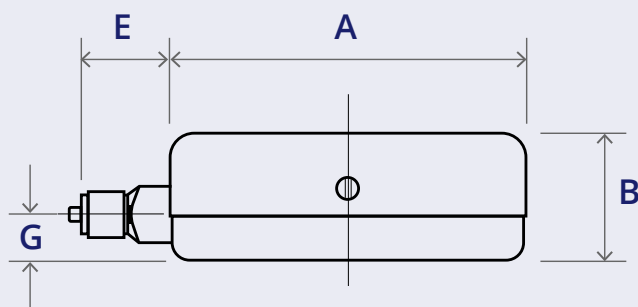
www.emeg.co.uk

## 100mm 'ECO' Range for HVAC Black & Chrome



<b>Diameter</b>	100mm
<b>Sensor</b>	Bourdon tube
<b>Wetted materials</b>	Brass
<b>Mounting style</b>	Direct mounting bottom entry
<b>Case material</b>	Powder coated steel – black
<b>Bezel material</b>	Chrome plated
<b>Connection</b>	3/8" BSP male
<b>Window</b>	Glass
<b>Scale</b>	Bar and PSI
<b>Accuracy</b>	Class 1.0
<b>Standard</b>	EN 837-1
<b>Features</b>	Blow-out disc
<b>Application</b>	Any gaseous or liquid pressure medium not aggressive to brass/bronze.

Ranges	Pressure											Vacuum
Bar	1	2	2.5	4	6	7	10	14	16	21	25	-1
PSI	15	30	36	60	90	100	150	200	230	300	360	30"Hg



Dimension	mm
A	100
B	35
E	24
G	13

**UK Head Office:**  
3 Dunston Place, Dunston Road,  
Whittington Moor, Chesterfield,  
S41 8NL  
T: +44 (0)1246 268678

**Design Office:**  
5 Scholar Green Road,  
Stretford, Manchester,  
M32 0TR  
T: +44 (0)161 8656208

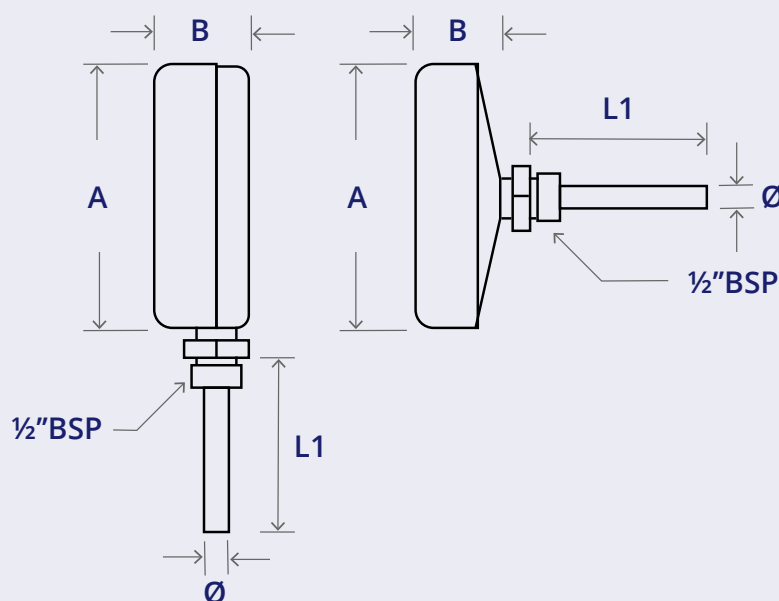
**Dubai Office:**  
Office 1905, Tameem House,  
Barsha Heights, Al Thanyah First,  
Dubai, UAE  
T: +971 04 568 6798

**Emeg®**

## 100mm 'ECO' Bimetal Thermometers for HVAC



<b>Diameter</b>	100mm
<b>Sensor</b>	Bimetal coil
<b>Pocket</b>	Solid drilled brass 12mm dia. 60 or 100mm under hex
<b>Mounting style</b>	Direct mounting bottom and centre back entry
<b>Case material</b>	Powder coated steel – black
<b>Bezel material</b>	Chromium plated
<b>Connection</b>	½" BSP male
<b>Window</b>	Glass
<b>Scale</b>	°C & °F
<b>Accuracy</b>	Class 1.0
<b>Standard</b>	DIN 16203
<b>Features</b>	Stainless steel pocket available
<b>Standard ranges</b>	-30+50°C&F, 0+120°C&F, 0+250°C&F



Dimension	mm
A	110
B (vertical)	48
B (co-axial)	26
Ø	12
L1	60 or 100

**UK Head Office:**  
3 Dunston Place, Dunston Road,  
Whittington Moor, Chesterfield,  
S41 8NL  
T: +44 (0)1246 268678

**Design Office:**  
5 Scholar Green Road,  
Stretford, Manchester,  
M32 0TR  
T: +44 (0)161 8656208

**Dubai Office:**  
Office 1905, Tameem House,  
Barsha Heights, Al Thanyah First,  
Dubai, UAE  
T: +971 04 568 6798

